

FLOORPLAN OPTIONS

We personalise our floorplans. Talk to us about our huge range of ready-to-go design options or simply visit www.burbank.com.au/south-australia for more details.

Facades available:

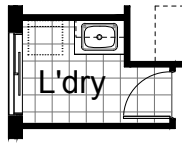
Callington, Eastwood, Harrogate	
Kent, Lancaster, Sheffield	
Swansea, Wiltshire	
Overall home width	12.47m
Overall home length	21.35m

Residence	178.9m ²	19.3sq
Garage	36.3m ²	3.9sq
Porch	5.7m ²	0.6sq
Alfresco	12.6m ²	1.4sq
Total	233.5m²	25.1sq

Listed details based on Sheffield facade floorplan (illustrated)

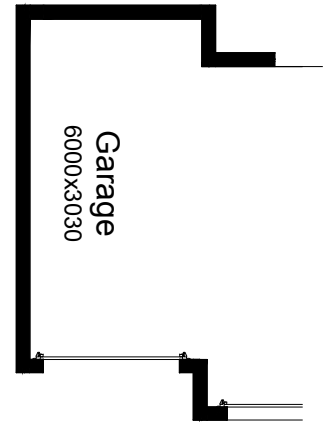
OPTION LD1

Provide Laundry upgrade with laminated insert trough, 1no. 800mm base cupboard, 1no. 800mm overhead cupboard with additional tiled splash back and bench top to suit.



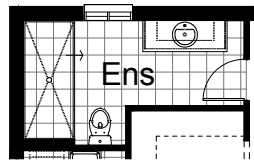
OPTION G3

Provide triple car Garage including additional roller door to front. Increases area by 20.51m². Increases width by 3120mm.



OPTION ENS1

Provide Ensuite upgrade with 2100mm wide tiled shower base in lieu of standard and decrease aluminium sliding window to 1200mm x 850mm in lieu of 1200mm x 1450mm to suit.



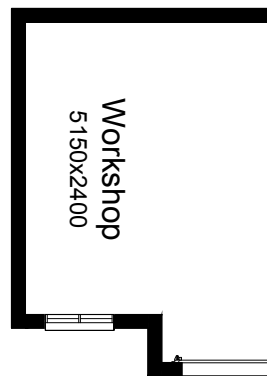
OPTION G1

Provide extension to Garage to create additional Storage area. Increases area by 4.58m². Increases width by 850mm.



OPTION G1

Provide extension to Garage to create Workshop area including additional window to suit. Increases width by 2400mm. Increases area by 13.51m².



OPTION IP1

Provide Real Flame Inspire 900 gas fireplace, 400mm off floor level in a 1400mm x 420mm boxed out plaster wall with a 4 sided black fascia to Family room side wall including additional 2no. 1800mm x 1210mm aluminium sliding window in lieu of 1no. 1800mm x 2410mm window.

